

LABEL1

	Product number/revision
	Serial number

PCBA Label

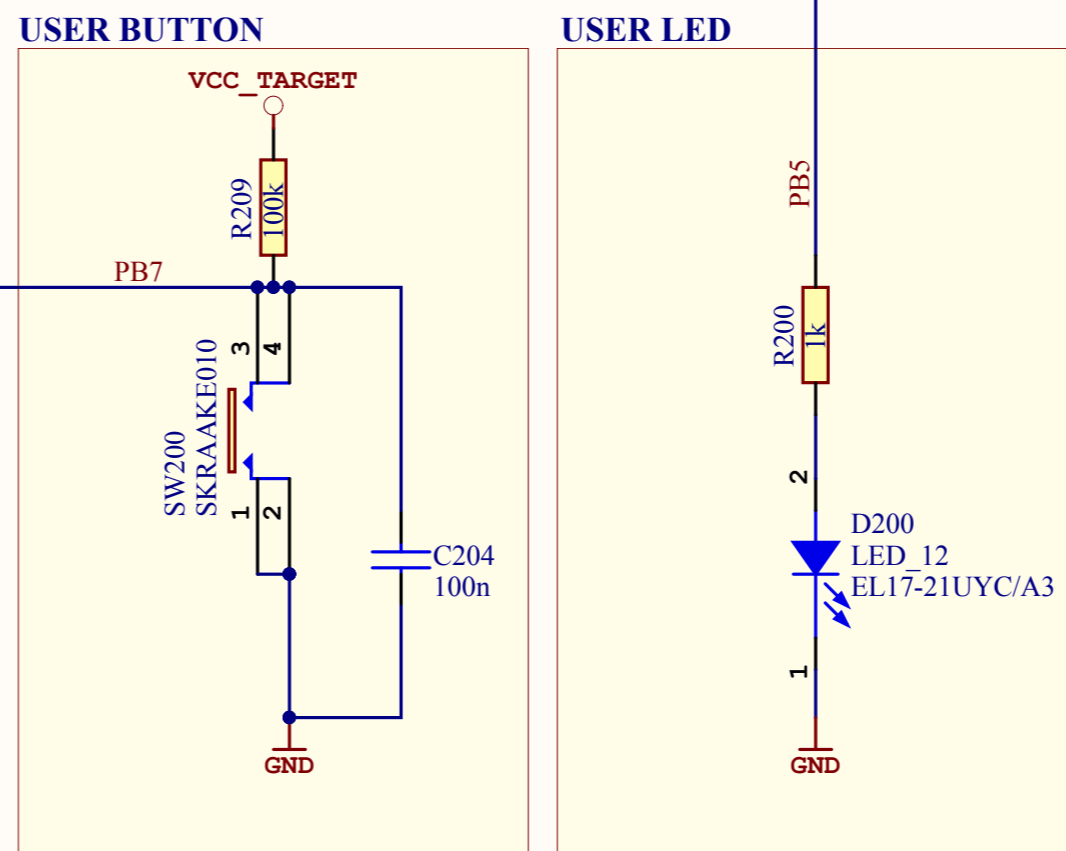
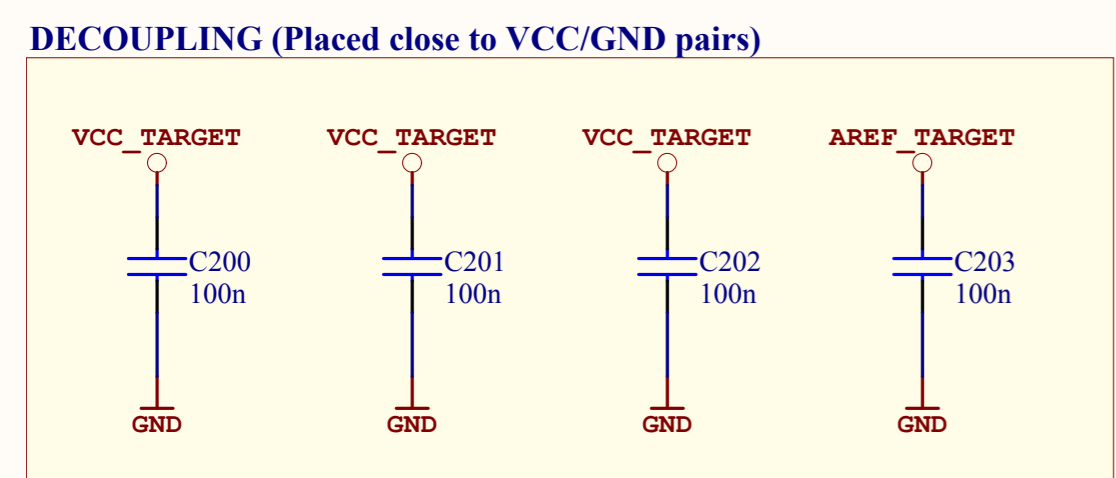
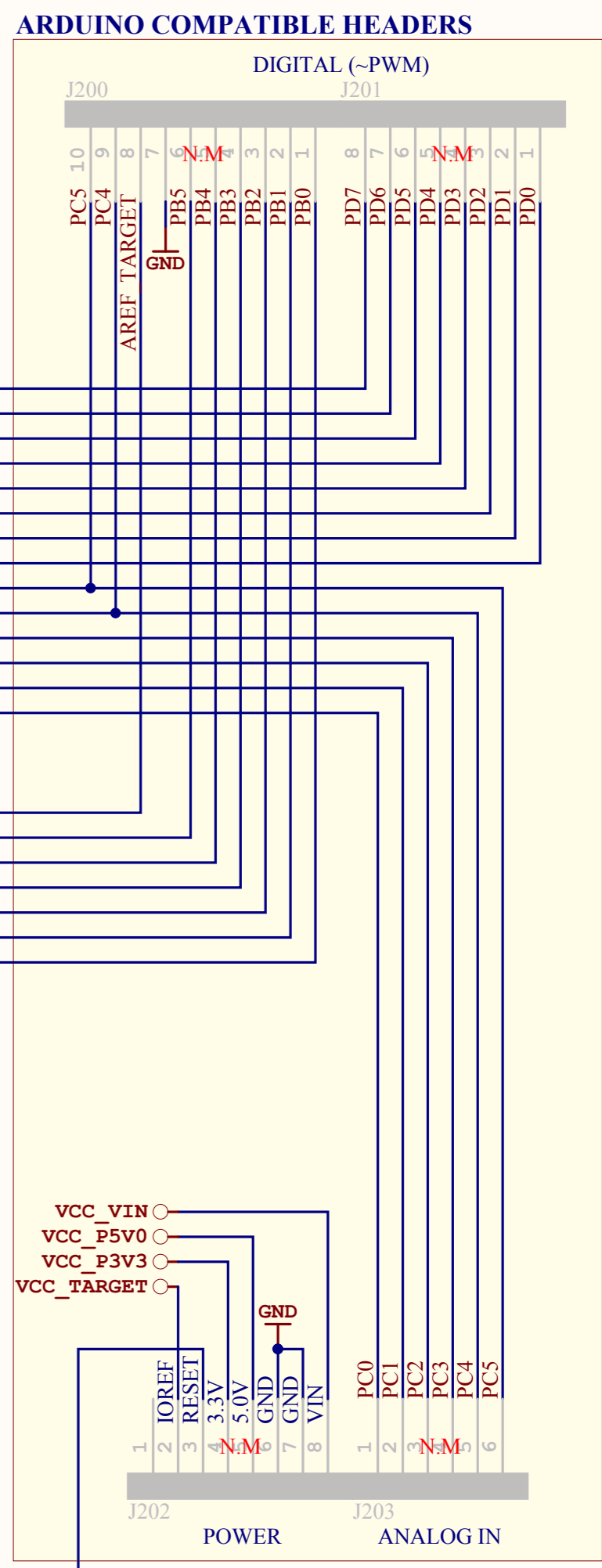
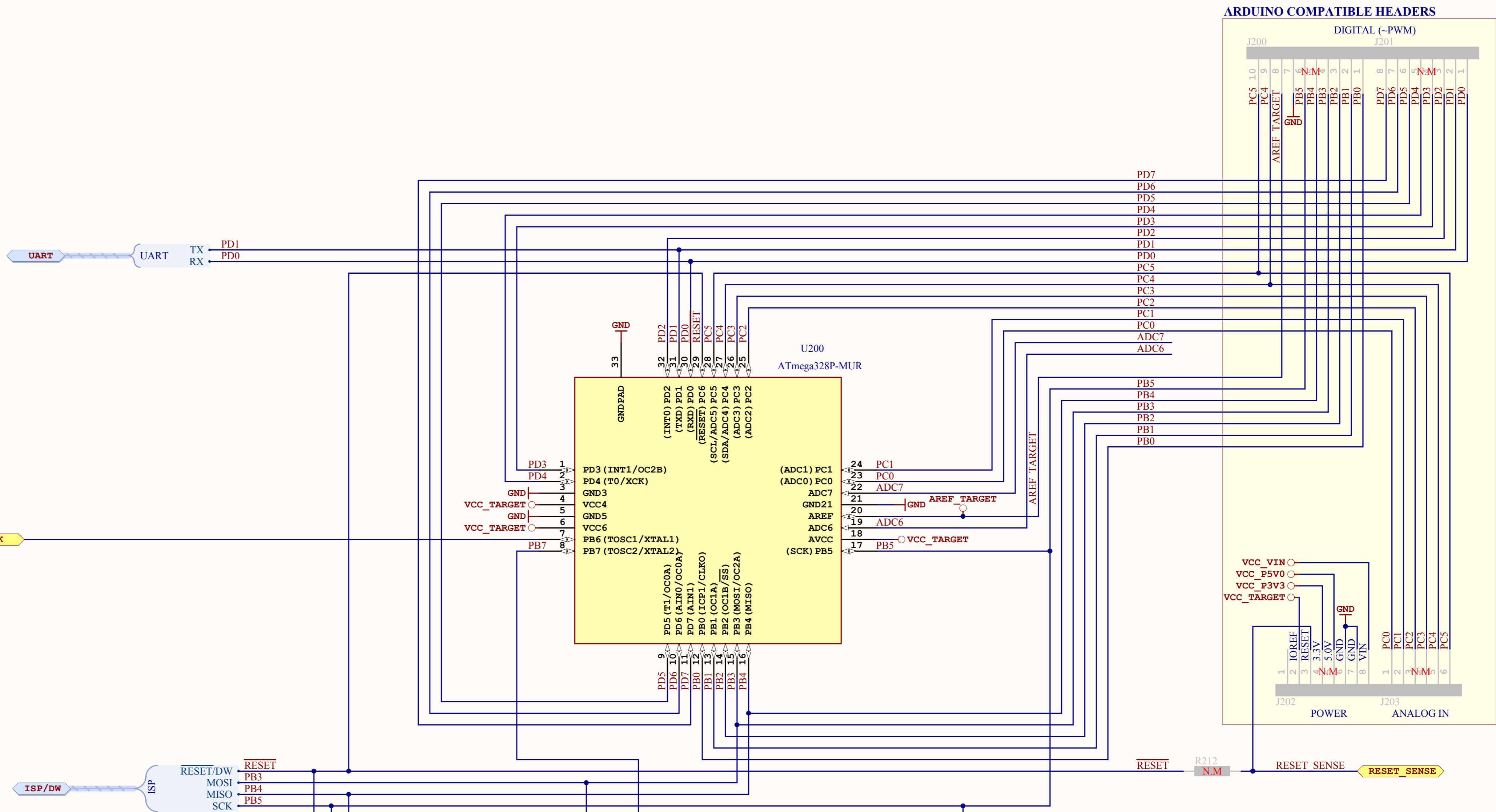
PCB

A08-2117
ATmega328P-XMINI PCB

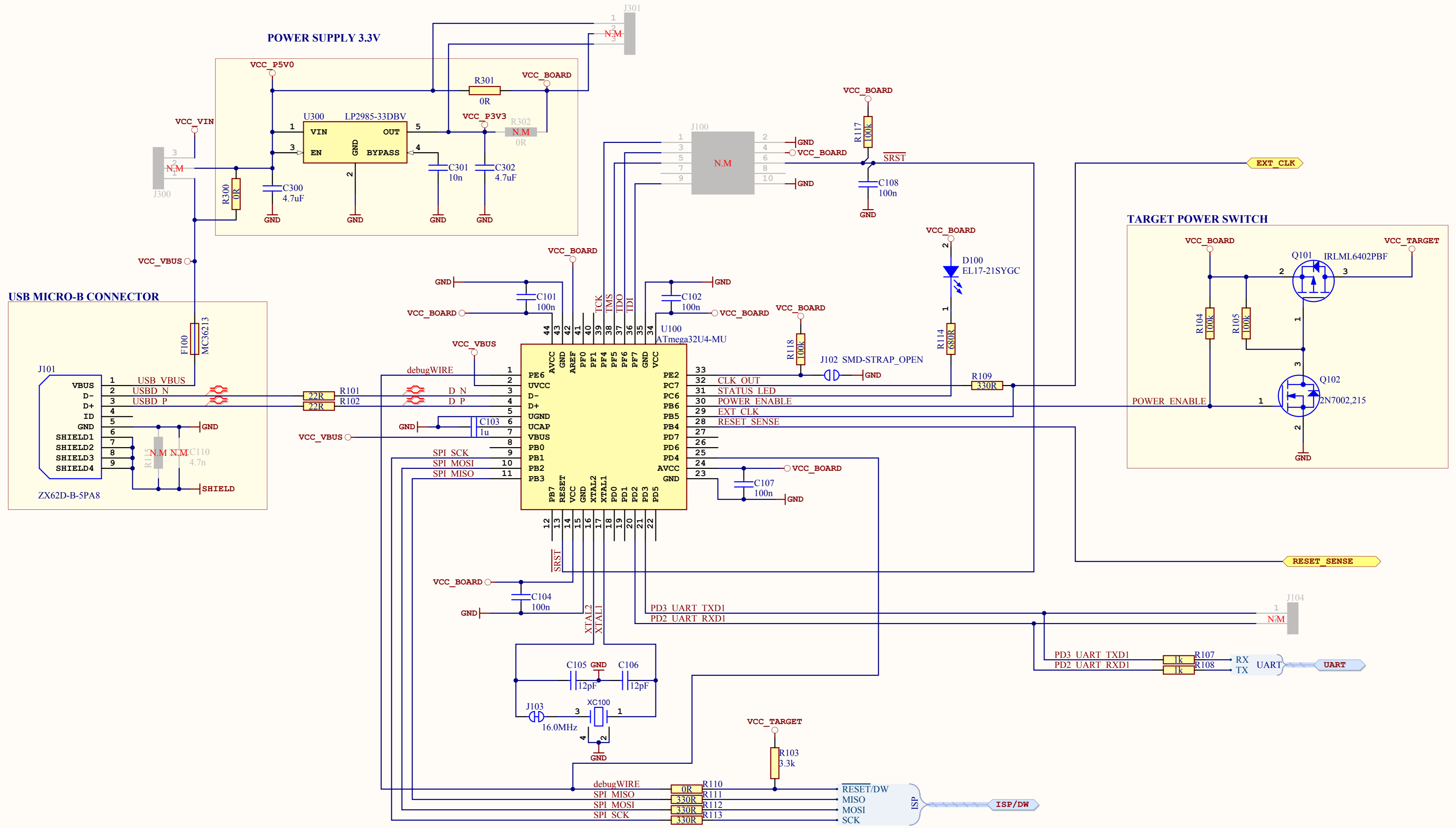
PCBA Documentation


 PCBADOC1 A12-0901	 TESTDOC1 A12-0853
 FW1 A11-0252	 TEST1 A11-0262

ATMEL Norway	*		 Enabling Unlimited Possibilities	
Vestre Rosten 79	*			
N-7075 TILLER	*			
NORWAY				
Date:	5/5/2014	8:09:21 PM	PAGE:	1 of 3
Document number:	A09-2323		Revision	2
TITLE: ATmega328P Xplained Mini				
ATmega328P_Xplained_Mini_TopLevel.SchDoc				

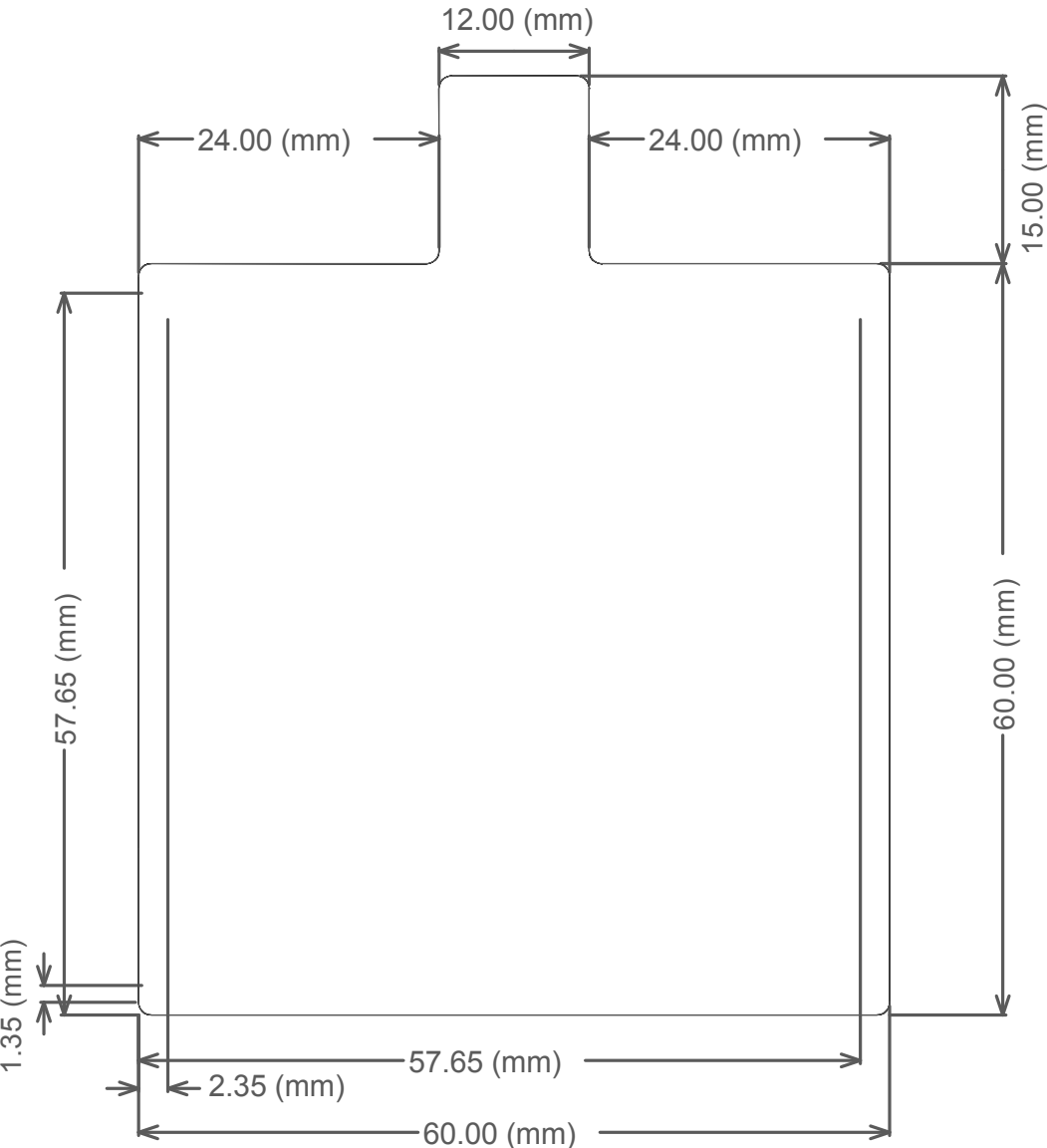


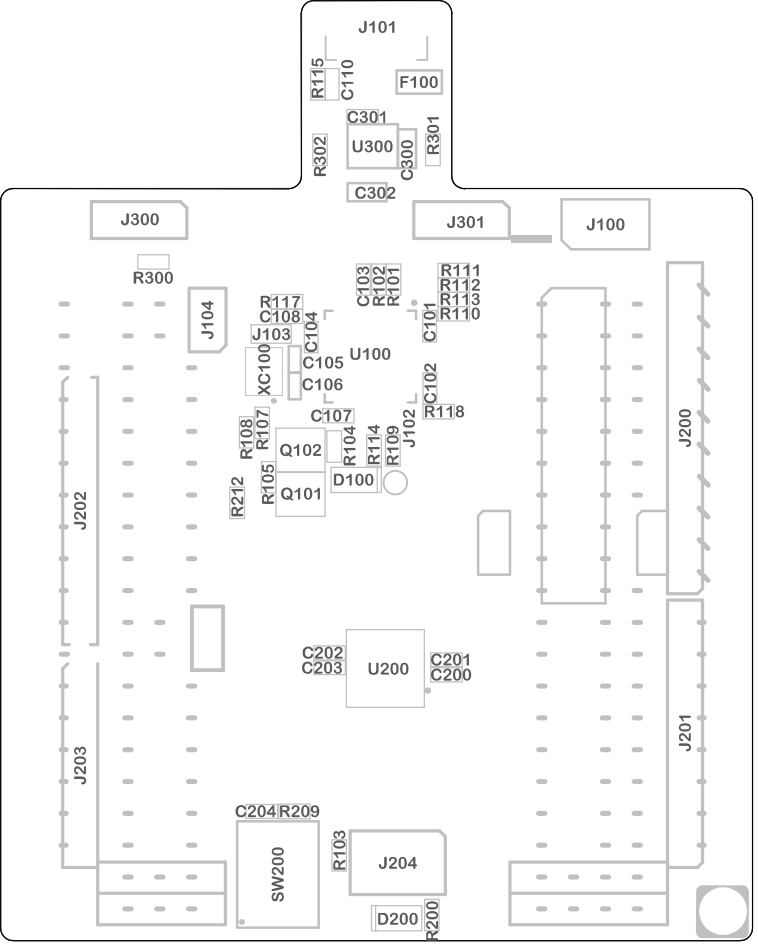
ATMEL Norway	*			
Vestre Rosten 79	*			
N-7075 TILLER	*			
NORWAY				
Date:	5/5/2014	8:09:21 PM	PAGE:	2 of 3
Document number:	A09-2323		Revision	1
TITLE: ATmega328P Xplained Mini				
ATmega328P_Xplained_Mini_Target.SchDoc				

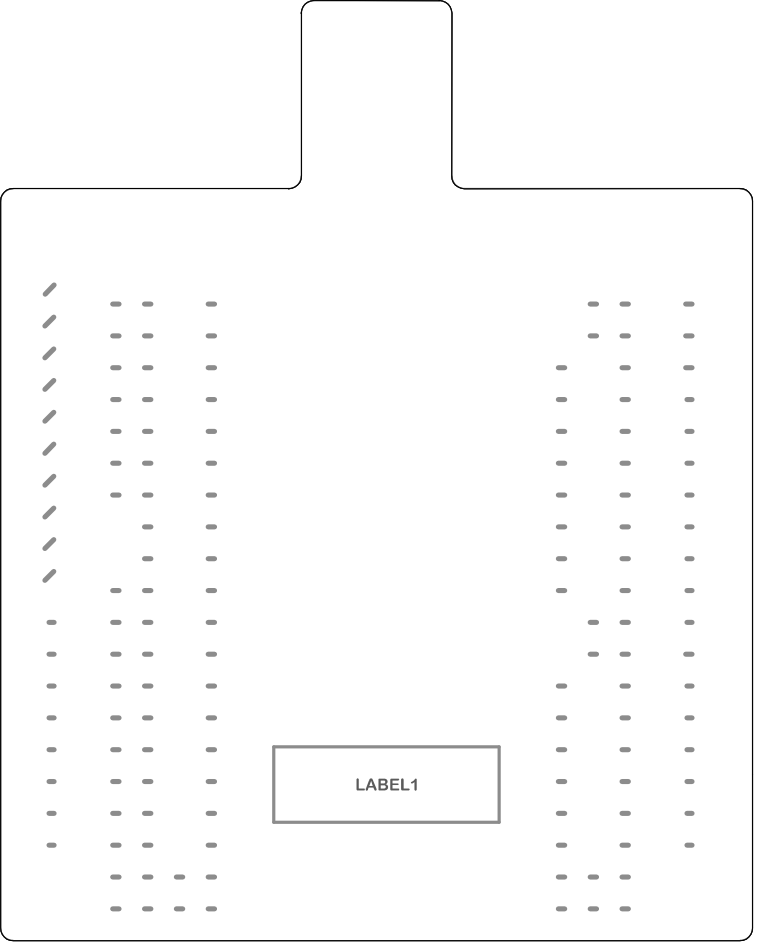


ATMEL Norway	*	 <small>Enabling Unlimited Possibilities</small>		
Vestre Rosten 79	*			
N-7075 TILLER	*			
NORWAY				
Date:	5/5/2014	8:09:21 PM	PAGE:	3 of 3
Document number:	A09-2323		Revision	2
TITLE: ATmega328P Xplained Mini				
ATmega328P_Xplained_Mini_Programmer.SchDoc				

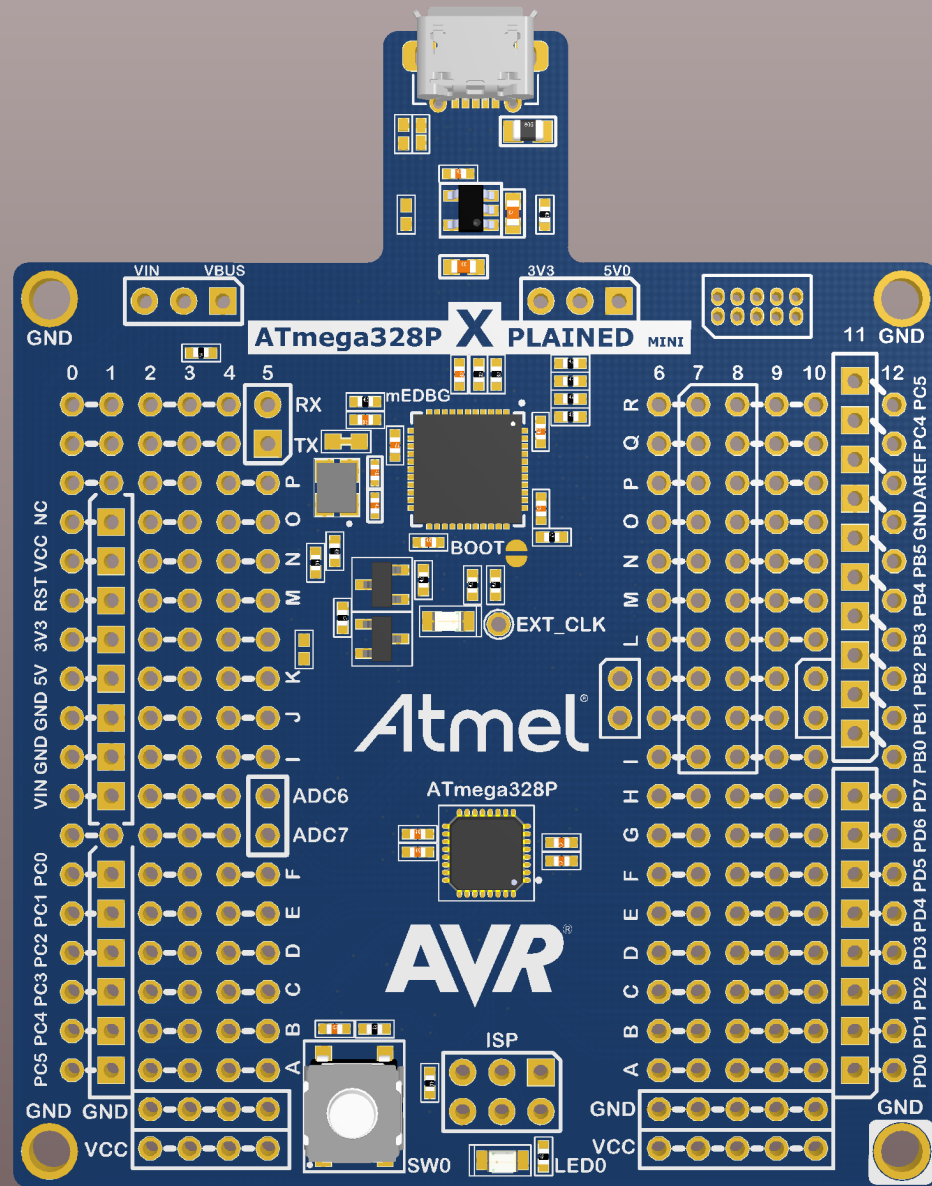
Mechanical Dimensions

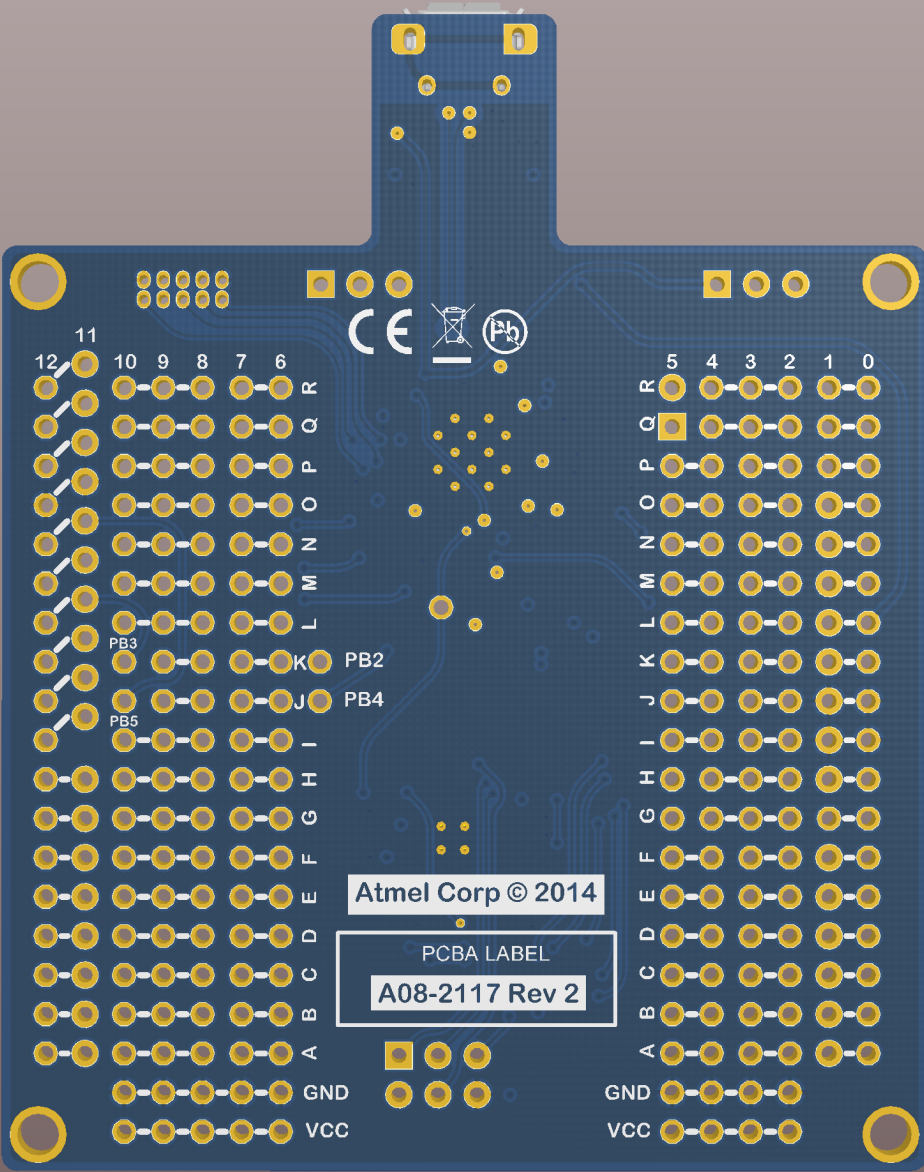






LABEL1





Atmel Corp © 2014

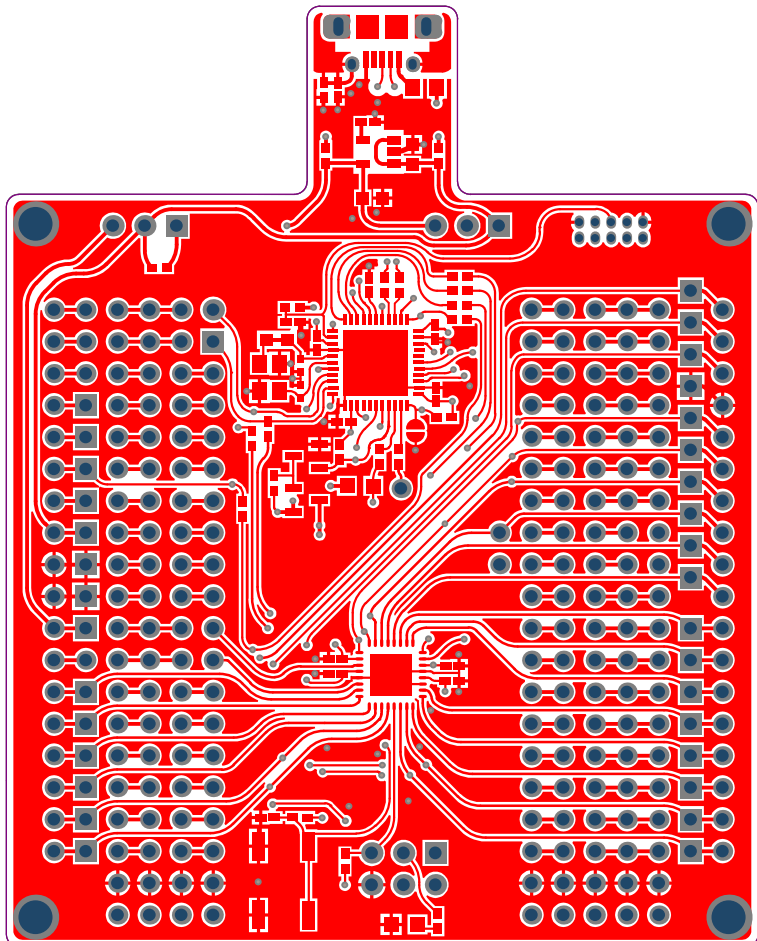
PCBA LABEL
A08-2117 Rev 2

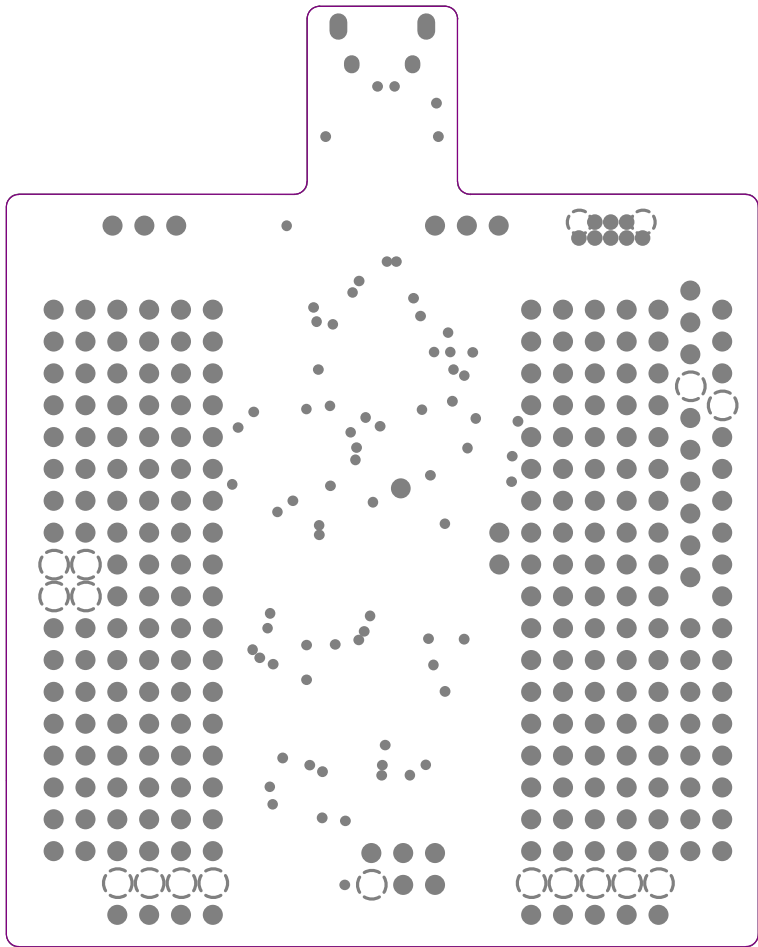
11
12
10 9 8 7 6
R
Q
P
O
N
M
L
K
J
I
H
G
F
E
D
C
B
A
GND
VCC

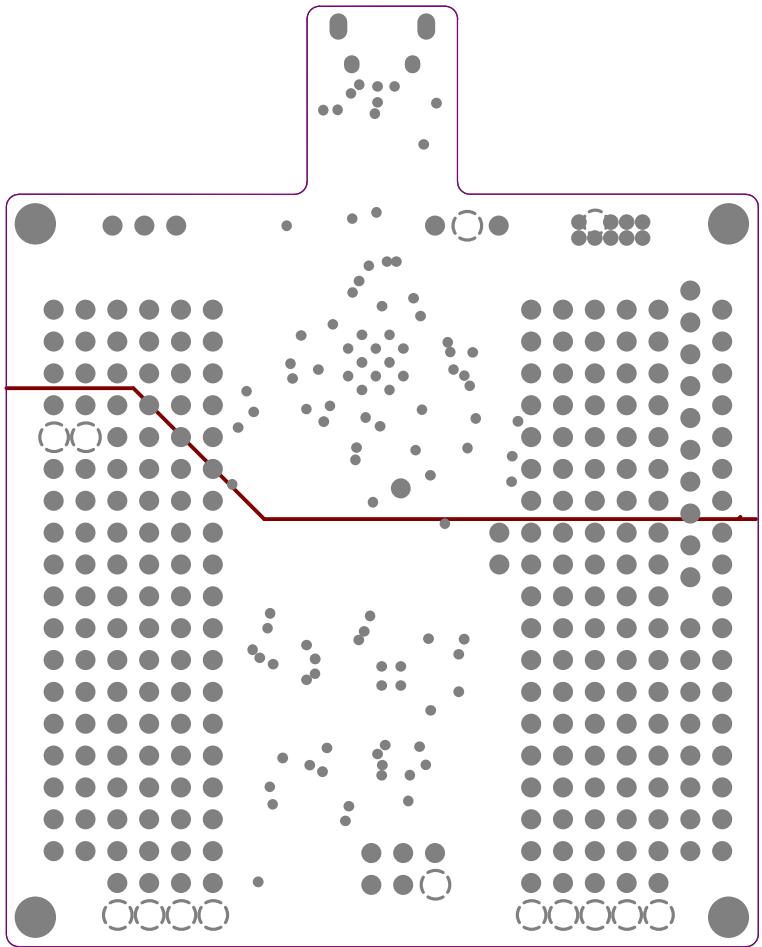
PB3
PB2
PB4
PB5

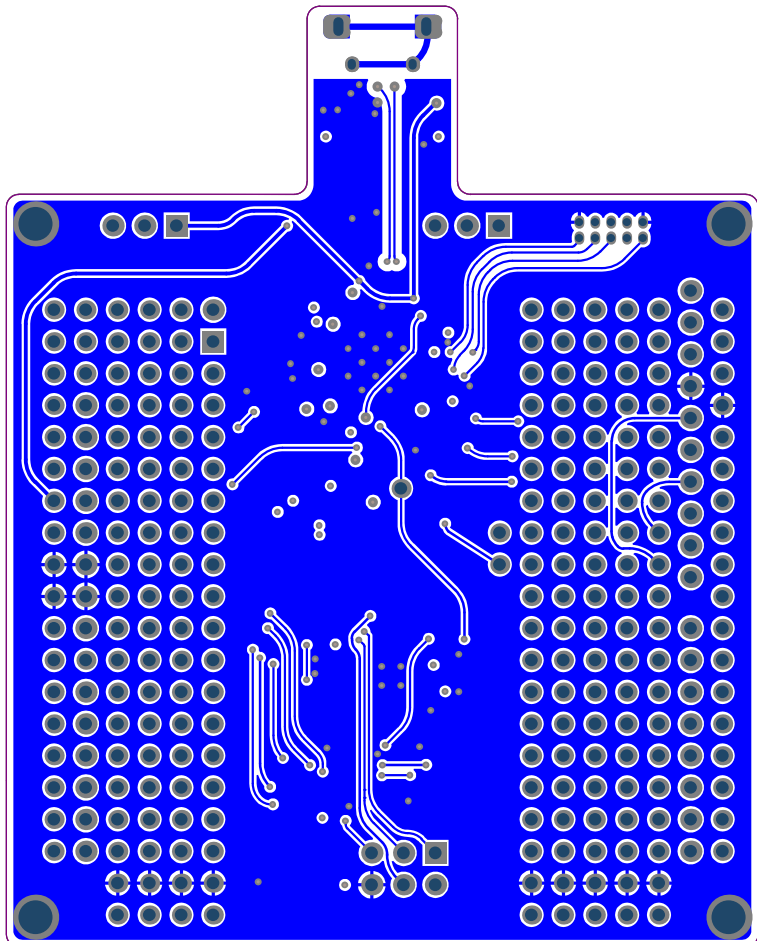


5 4 3 2 1 0
R
Q
P
O
N
M
L
K
J
I
H
G
F
E
D
C
B
A
GND
VCC









Component list

ATmega328P Xplained Mini

Source Data From: ATmega328P_Xplained_Mini.PrjPCB
 Project: ATmega328P_Xplained_Mini.PrjPCB
 Variant: Default_assembly



Report Date: 5/5/2014 8:09:41 PM
 Print Date: 5/5/2014 8:09:39 PM

Fitted	Designator	Quantity	Value	Manufacturer	MPN	Description
Fitted	C101, C102, C104, C107, C108, C200, C201, C202, C203, C204	10	100n	Kemet	C0402C104K4RACTU	Ceramic capacitor, SMD 0402, X7R, 16V, +/-10%
Fitted	C103	1	1u	Kemet	C0402C105K9PAC	Ceramic capacitor, SMD 0402, X5R, 6.3V, +/-10% (de26942)
Fitted	C105, C106	2	12pF	Kyocera-elco	CM05CG120J50AH	Ceramic capacitor, SMD 0402, NP0, 50V, +/-5% (de19819)
Fitted	C300, C302	2	4.7uF	AVX	0603ZD475KA12A	Ceramic capacitor, SMD 0603, X5R, 10V, +/-10%
Fitted	C301	1	10n			Ceramic capacitor, SMD 0402, X7R, 25V, +/-10%
Fitted	D100	1	EL17-21SYGC	Everlight	EL17-21SYGC	LED, Green, Wave length=575nm, SMD 0805, +/-70°
Fitted	D200	1	EL17-21UYCA3	Everlight	17-21UYCS530-A3/TR8	LED, Yellow, Wave length=591nm, SMD 0805, +/-70°
Fitted	F100	1	MC36213	Mullcomp	MC36213	Resetable PTC fuse, I _h = 0.5A, I _t = 1.0A, 0805 package
Fitted	FW1	1	MEDBG firmw are			MEDBG firmw are
Fitted	J101	1	ZX62D-B-5PA8	HIROSE	ZX62D-B-5PA8	Micro USB B Connector, Standard SMT + DIP
Fitted	LABEL1	1	PCBA Label	ACT Logimark AS	505462	PCBA identification label PP Top White Gloss
Fitted	PCB1	1	ATmega328P-XMINI PCB			ATmega328P-XMINI PCB documentation
Fitted	PCBADOCC1	1	ATmega328P-XMINI PCB doc			ATmega328P-XMINI PCB documentation
Fitted	Q101	1	IRLML6402PBF	International Rectifier	IRLML6402PBF	P-ch. MOSFET, -30V, -3.7A continuous RDS(ON)=0.05Ohm@VGS=4.5V, RDS(ON)=0.08Ohm@VGS=2.5V
Fitted	Q102	1	2N7002.215	NXP	2N7002.215	N-Channel MOSFET, 60V, 0.300A continuous, 1.2A Peak, RDS(ON) = 3.8Ohm@VGS=4.5V, VGS(th)<2.5V
Fitted	R101, R102	2	22R	Samsung	RC100SF22R0CS	Thick film resistor, SMD 0402, 1/16W, 1% (de23607)
Fitted	R103	1	3.3k			Thick film resistor, SMD 0402, 1/16W, 1%
Fitted	R104, R105, R117, R118, R209	5	100k			Thick film resistor, SMD 0402, 1/16W, 1%
Fitted	R107, R108, R200	3	1k			Thick film resistor, SMD 0402, 1/16W, 1%
Fitted	R109, R111, R112, R113	4	330R			Thick film resistor, SMD 0402, 1/16W, 1%
Fitted	R110, R300, R301	3	0R	(n/a)	RMCF0402ZT0R00	RES 0.0 Ohm 1/16W 0402 SMD
Fitted	R114	1	680R			Thick film resistor, SMD 0402, 1/16W, 1%
Fitted	SW200	1	SKRAAKE010	ALPS	SKRAAKE010	6.2x6.2 mm SMD tact switch, same as A08-0091 but less force is needed
Fitted	TEST1	1	Test SW for A09-2321			Test SW for A09-2321, ATmega328P-XMINI
Fitted	TESTDOC1	1	ATmega168-XMINI Test Instructions			Fixture Test Instructions for ATmega168-XMINI
Fitted	U100	1	ATmega32U4-MJ	ATMEL	ATmega32U4-MJ	ATmega32U4 QFN package
Fitted	U200	1	ATmega328P-MJR			32k AVR with ADC/TWRS-232
Fitted	U300	1	LP2985-33DBV	Texas Instruments	LP2985-33DBV	LDO 3.3V 150mA SOT23-5 1.5% (cer. cap)
Fitted	XC100	1	16.0MHz	Epson Toyocom	TSX-3225 16.0000MF09Z-AC3	16MHz uXtal, 3.2 x 2.5 mm SMD, CL=9pF, 15PFM, ESR=80ohm(Max)
Not Fitted	C110	0	4.7n			Ceramic capacitor, SMD 0402, X7R, 25V, +/-10% (de35287)
Not Fitted	J100	0	PN HEADER 2x5	Garry	STL21-0730 G TT-10U	2x5 pin header, 1.27mm pitch, THM
Not Fitted	J104	0	HMTSW-102-23-F-S-237	SAMTEC	HMTSW-102-23-F-S-237	1x2 pin header, 2.54mm pitch, Pin-in-Paste THM
Not Fitted	J200	0	SSQ-110-21-F-S	SAMTEC	SSQ-110-21-F-S	1x10 receptacle pin header, low insertion force, 2.54mm pitch THM, Pin in Paste
Not Fitted	J201, J202	0	SSQ-108-21-F-S	SAMTEC	SSQ-108-21-F-S	1x8 receptacle pin header, low insertion force, 2.54mm pitch THM, Pin in Paste
Not Fitted	J203	0	SSQ-106-21-F-S	SAMTEC	SSQ-106-21-F-S	1x6 receptacle pin header, low insertion force, 2.54mm pitch THM
Not Fitted	J204	0	MTSW-103-08-L-D-276	SAMTEC	MTSW-103-08-L-D-276	2x3 pin header, 2.54 mm pitch, THM
Not Fitted	J300, J301	0	HMTSW-103-23-F-S-237	SAMTEC	HMTSW-103-23-F-S-237	1x3 pin header, 2.54mm pitch, Pin-in-Paste THM, 1mm hole
Not Fitted	R115	0	1M			Thick film resistor, SMD 0402, 1/16W, 1%
Not Fitted	R212, R302	0	0R	(n/a)	RMCF0402ZT0R00	RES 0.0 Ohm 1/16W 0402 SMD

Approved	Notes